

19, 19A, 19B, 19C

WYTHENSHAW

X69, 369

CHEADLE HULME

Newall Green

19, 19A, 19B, 19C, 43A, 44, 105, 369

HEALD GREEN

A34

FB

Jn5

43A, 105

45A

B5094

FB

Davenport Green

Woodhouse Park

X69, 369

130, 378

A34

19, 19A, 19B, 19C,

Hotel

19, 19A, 19B, 19C,

Moss Nook

FB

HANDFORTH

P R T

285, 286, 288

19, 19A, 19B, 19C, 43A, 44, 45A, 105, 199, 200, 369, X69

The Station & Cycle Centre

T1

T2

T3

19, 19A, 19B, 19C

World Freight Terminal

Manchester Airport

P R T

Styal

130, 378

FB

HALEBARN

19, 19A, 19B, 19C, 285, 286

Jn6

19, 19A, 19B, 19C

200

Aviation Viewing Park

P R T

200

130

B5358

Warburton Green

19, 19A, 19B, 19C, 285, 286

M56

288

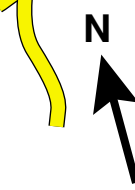
Aviation Viewing Park

P R T

200

130, 378

B5358



River Bollin

Hotel

Styal Country Park

200

Quarry Bank Mill

P R T

B5166

Hotel

130

Castle Hill

Tunnel

Hotel

A538

Hotel

Hotel

FB

B5166

Lacey Green

378

130

A34

Wilmslow Park

Tunnel

Hotel

A538

Hotel

Hotel

FB

B5166

Lacey Green

378

130

A34

Wilmslow Park

Morley Green

288

288

FB

B5166

Lacey Green

378

130

A34

Wilmslow Park

Twinnies Bridge

FB

FB

FB

Hotel

FB

FB

The Carrs

FB

FB

A538

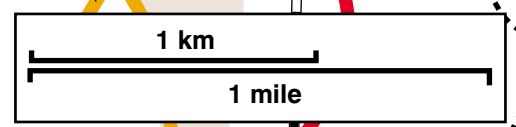
FB

FB

Reproduced from Ordnance Survey mapping with permission from the Controller of HMSO © Crown copyright. Unauthorised reproduction infringes Crown copyright and may lead to prosecution or civil proceedings. Cheshire County Council Licence No.100019582.2004

Bus services

- 19, 19A, 19B, 19C } Altrincham - Wythenshawe circular, via Hale, Hale Barns, (M.A.) Manchester Airport, Sale Moor, Sale and Broadhead
- 26 } Macclesfield - Alderley Park - Wilmslow
- 43A } M.A. - Manchester via Woodhouse Pk, Wythenshawe, Northenden
- 44 } M.A. - Manchester via Wythenshawe, Gatley, Cheadle
- 45A } M.A. - Manchester via Gatley and Cheadle
- 105 } M.A. - Manchester via Wythenshawe, Benchill, Sharston
- 130 } Macclesfield - Manchester via Wilmslow, Colshaw, Handforth
- 199 } Buxton - Stockport - M.A. - Manchester
- 200 } M.A. - Styal - Quarry Bank Mill - Wilmslow (and Viewing Pk weekends)
- 285/6 } Altrincham - Hale - Hale Barns circular
- 287 } Macclesfield - Prestbury - Mottram - Alderley Edge - Wilmslow
- 288 } Knutsford - Altrincham via Moberley, Wilmslow, Morley Green
- X69 } M.A. - Stockport via Heald Green
- 369 } M.A. - Stockport via Wythenshawe and Heald Green
- 378 } Wilmslow - Stockport via Lacey Green, Colshaw, Handforth, Bramhall



0.25ml to Moberley

ALDERLEY EDGE

287

## Neighbours

### Quarry Bank Mill, window on our industrial past, sits next to Manchester Airport, gateway to the world.

**The River Bollin** is a short tributary of the Mersey which rises in the Pennine foothills. It now flows into the Manchester Ship Canal near Warburton.

**The Bollin Valley Partnership** started as a pioneering experiment in 1972, managing land around towns for wildlife, farming and recreation. We now look after over 100 miles (160 Km) of way-marked paths; several picnic sites; a Country Park and Visitor Centre; the Aviation Viewing Park; part of the Trans Pennine Trail; and coordinate the Bollin section of the Mersey Basin Campaign.

We work with others to improve woodlands, ponds, grasslands and hedgerows, for both wildlife and people. Partnership Rangers, helped by an Education Group, also run a varied **annual activity programme** (please ring for a leaflet) which includes a Taster Day for people with disabilities.

Encouraging people to enjoy the countryside (preferably without a car) is an important part of our work. **This leaflet is one of 5 indicating the Bollin Valley Way and other recreational routes and opportunities diagrammatically.** For more detail, please refer to OS Explorer Maps 268 and 276. See [www.ordsvy.gov.uk](http://www.ordsvy.gov.uk).

The 25 mile (40Km) **Bollin Valley Way** from Macclesfield Riverside Park to Partington gives walkers a feel for the Valley's variety. It ranges from views of the hills above Macclesfield, through fields and woodlands, towns and villages, under and over roads, railways and canals and past Manchester Airport, to the industries near Manchester Ship Canal.

**Please remember:** most of these walks cross private farm land. Keep to the paths, take all litter home, fasten gates and keep your dog under control. Country paths are not pavements, so wear sturdy footwear and be prepared for the British weather. Not all paths shown are managed by the Bollin Valley Partnership.

**People with disabilities.** Sadly it is impracticable to make all country footpaths fully accessible, although ambulant but less mobile visitors will find many paths in the Valley suitable because they are reasonably level – please ring and check. However, the Aviation Viewing Park is wheelchair accessible, as are much of the Carrs in Wilmslow and Quarry Bank Mill and the Styal estate (National Trust). See [www.cheshireforall.com](http://www.cheshireforall.com) or ring 01244 603107 for more details.

**Around the Airport.** Since completion of Runway Two, a comprehensive environmental package has restored and enhanced the scenic beauty of the surrounding area. Acres of new scrub, woodland and wildflower grassland, 5km of hedgerows, 46 new ponds, bat barns and other wildlife habitats enhance new pathways and the **Airport's Orbital Cycleway** which complement the Bollin Valley Way.

Passengers, visitors and local employees, indeed **anyone can access these rural routes via the Airport's new public transport interchange: the relaxing, spacious surroundings of 'The Station' bring bus, coach, rail, cycling and eventually Metrolink travel under one roof.**

Maps showing cycle routes around the airport in greater detail are available from the airport cycle centre (See Below)

#### Bollin Valley Partnership funding partners:

- Cheshire County Council
- Environment Agency
- Macclesfield Borough Council
- Manchester Airport
- Mersey Basin Campaign
- Trafford Metropolitan Borough Council

#### Contacts for further information:

**Bollin Valley Partnership:** Phil Robinson, Partnership Manager, County Offices, Chapel Lane, Wilmslow, SK9 1PU. Tel 01625 534790/1, Fax 01625 534790, Email [bollin@cheshire.gov.uk](mailto:bollin@cheshire.gov.uk)

**Aviation Viewing Park.** Wilmslow Old Rd, off A538 Altrincham Rd, Ringway (Bollin Valley Partnership. For separate leaflet about the Park, ring 01625 534790.) 01625 534790, [bollin@cheshire.gov.uk](mailto:bollin@cheshire.gov.uk)

**Cheshire Cycleway** (National Cycle Network, NCN 70) leaflets from Bollin Valley or Cheshire Countryside Management Service [countryside@cheshire.gov.uk](mailto:countryside@cheshire.gov.uk), [www.cheshire.gov.uk/countryside](http://www.cheshire.gov.uk/countryside) or /cycling

**Quarry Bank Mill and Styal Estate** (National Trust) Georgian working water-powered cotton mill; Apprentice house and garden; colony village of Styal; riverside woodland walks. 01625 527468, [quarrybankmill@nationaltrust.org.uk](mailto:quarrybankmill@nationaltrust.org.uk), [www.quarrybankmill.org.uk](http://www.quarrybankmill.org.uk). **Buses:** 200 'Styal Shuttle' Manchester Airport-Styal (daily, hourly, every journey calls at the Mill).

**Manchester Airport Cycle Centre** open Tues, Wed, Thurs for information, repairs etc. (situated in The Station, Manchester Airport) 0161 489 3487, [cyclecentre@manairport.co.uk](mailto:cyclecentre@manairport.co.uk)

**Manchester Airport Tourist Information Centres**  
Terminal 1: 0161 436 3344, [miat1@nwtb2.u-net.com](mailto:miat1@nwtb2.u-net.com)  
Terminal 2: 0161 489 6412, [miat2@nwtb2.u-net.com](mailto:miat2@nwtb2.u-net.com)

**Wilmslow Tourist Information Centre**  
01625 522275, [wiltic@macclesfield.gov.uk](mailto:wiltic@macclesfield.gov.uk)

**Rail Services:** ring 08457 48 49 50

**Bus Services:** The services shown overleaf run at least 5 days/week. For full details of all bus services ring Traveline on 0870 608 2 608 (or 01625 534850 for Cheshire journeys, [traveline@cheshire.gov.uk](mailto:traveline@cheshire.gov.uk) 0161 228 7811 for Greater Manchester).



- 1 From Peak to Plain
- 2 Wizard!
- 3 Neighbours
- 4 Town Meets Country
- 5 Time Travel

- A Dunham Massey
- B Quarry Bank Mill
- C The Edge @ Alderley
- D Hare Hill
- E Macclesfield Forest / Trentabank

# THE BOLLIN VALLEY WAY

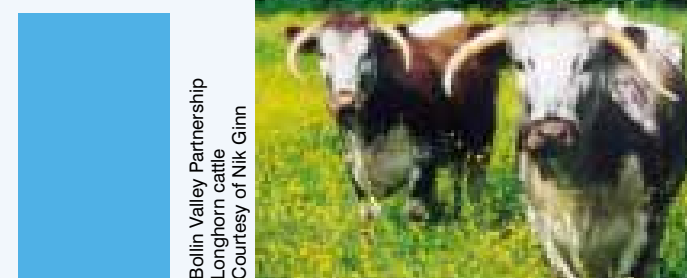


& other recreational routes between Wilmslow & Hale Barns including Manchester Airport

**3 of 5 Neighbours**



Coming into land over the River Bollin. Courtesy of Claire Foulweather.



Bollin Valley Partnership  
Longhorn cattle  
Courtesy of Nik Ginn



KEY	
	Country Pub
	Other Refreshment
	Toilets
	Information
	Train Station
	Bus Station
	Bus Services
	Built-up Area
	Buildings
	Forest / Woodland
	Picnic Site
	Museum
	National Trust Properties
	Railway
	Footbridge
	M56
	Roads
	Fences/Hedges
	Canals / Rivers
	Lakes / Reservoirs

Walks & Cycle Routes	
	Bollin Valley Way & Footpath Junctions
	Cheshire Cycleway (NCN 70)
	Other Recommended Cycle Routes
	Off Road Cycle Tracks/Lanes
	Bridleway
	Permissive Bridleway & Public Footpath
	R.U.P.P. (Road used as public path)
	Other Public Footpaths

